

The calibration carry case CALIWELD GCU 1.0 can check the good operation of all welding machines (MIG/MAG, TIG, MMA). It is essential for compliance with the EN 50504 standard and for performing PQR (Procedure Qualification Record) and WPS (Welding Procedure Specification). The comprehensive software can save and load all welding settings.

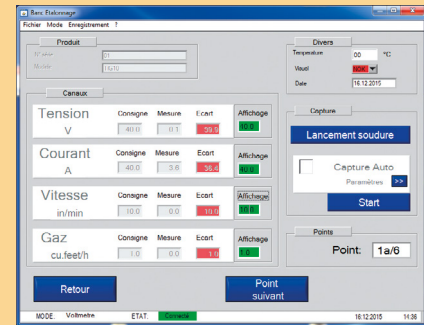
## CARRY CASE CONTENT

### EQUIPMENT DEPENDING ON THE OPERATING MODE AND THE WELDING PROCESS

SELECTED WELDING PROCESS	Base	OPERATION PERFORMED	
		Calibration	or PQR/WPS
MIG		 Option	 Option
TIG			
MMA		Base only	Base only



Included software  
4 languages (FR / EN / DE / ES)



## OPTIONS

**Réf. 060517 : MIG/MAG WIRE SPEED SENSOR CALIWELD SWM1**

The sensor measure the wire speed between the wire reel and the wire feeder.

**Réf. 060524 : MEASURE CABLE FOR MIG/MAG CALIBRATION 2M CALIWELD ECM1 - EURO/GCU1.0**

**Réf. 060647 : 2 CONNECTION CABLES 2m CALIWELD LOAD 3% WITH CARRY CASE**

**Réf 060418 : RESISTIVE LOAD - 320A at 100% (MIG)**

**Réf. 060425 : RESISTIVE LOAD - 550A at 50% (MIG)**

## SPECIFICATIONS



The carry case features Flexible Voltage (FV) and can handle power supply voltage from 85 to 265V.



The case is shock and weather resistant (IP67).

## PACKS CALIWELD

**Réf. 060630** CALIBRATION KIT CALIWELD (060456 + 060425 + 060647 + 060524)

**Réf. 060654** CALIWELD CALIBRATION PACK (060456 + 060524)

**Réf. 060661** CALIWELD TRACKING PACK (060456 + 060517)

Internet links  
(clickable) :

[pdf instruction manual](#)



[video - demonstration](#)

Technical specifications						Dimensions	
Supply	Measuring type	Voltage (U)	Intensity (I)	Wire speed ⚙	All gas	H	P
		TRMS / Moy / Instant	TRMS / Moy / Instant				
230V - 1 ph	Measuring range	1 - 120 V (±0.5%)	1 - 500 A (±0.5%)	1 - 30 m/min (±1%)	1 - 30 L/min (±5%)	21 x 43 x 57 cm	12 kg