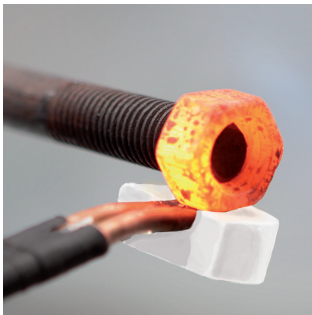


The **POWERDUCTION 37LG** provides instant and powerful heating to release, or simply heat, steel or aluminium. Light and portable, this device can also heat metallic parts continuously for several minutes without interruption thanks to its water-cooling system.

## The ideal tool for mechanical and maintenance work:

- Essential for releasing the steering linkage (wheel alignment).
- Removes glow plugs, seized-up wipers and spare wheel compartments.
- Releases seized up bolts.
- Releases steering ball joints without damaging the bellows.
- Releases shaft drives seized up in the hub.
- Removes automotive or HGV exhaust lines.
- Removes glued-on, steel or aluminium parts.



Releases rusted bolts



Releases steering linkages



Supplied with a complete inductor 90°

## FEATURES

### • High heating performance:

3,700 W of power that can be easily adjusted in 250 W increments. Directly heats up the heart of the metallic part at a depth of 6 mm. This device is capable of heating steel until it is red hot (around 1,000°C):

	37LG	39LG	50LG
	M10 → 1 s	M12 → 1 s	M14 → 1 s
	2 mm → 5 s	2 mm → 5 s	4 mm → 5 s 2 mm → 3 s
	Ø 10 → 15 s	Ø 10 → 15 s	Ø 10 → 10 s

### • Secure and time saving:

Immediate, flameless heating in a specific area, allows work to be carried out close to cables, pipes or any other heat-sensitive part without having to be dismantled.

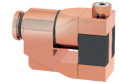
### • Portable machine:

Used to reach difficult-to-reach areas. Supplied with a two meter inductor cable.

## Options :



PN. 061569  
S70 inductor



PN. 059269  
S180 inductor



PN. 082212  
Welding coolant - 2 l



PN. 051331 + 052284  
UNIVERSAL 800 + Over hanging arm



PN. 062511  
Welding coolant - 5 l

50 Hz	A	W	Freq. kHz	Container capacity cooling liquid			cm	kg	m	m
				37LG	39LG	50LG				
230V 1~	16	3700	20-30	1,5 l	7 l		28,5 x 45 x 25	15	2	2