

**TRADITIONAL WELDING MACHINE FOR REPAIR AND MAINTENANCE WORK.**

- ✓ Power input: Single phase 230V – 50/60Hz or 2 phase 400V – 50/60Hz.
- ✓ Accepts welding electrodes from Ø2 to 4 mm
- ✓ Very easy-to-use
- ✓ Setting by turning the knob
- ✓ Strong ventilated steel casing
- ✓ Thermal overload protection
- ✓ Selectable welding output power up to 220A



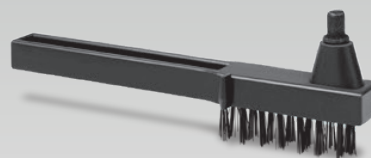
**DELIVERED WITH :**



Hand mask  
Shade 11



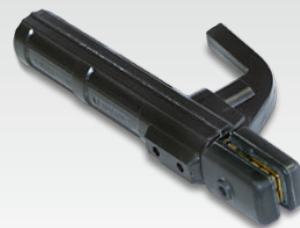
Mono/2 phase  
connection




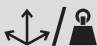
Hammer/brush



earth clamp  
1.5m



electrode holder  
1.5m

50/60hz		I <sub>2</sub> MMA	EN60974-1 (40°C) I <sub>A</sub> (60%)	U <sub>0</sub>	 cm/kg
230V 1~	25A	220A	90A	48V	48x30x38 / 22
400V 2~	13A				