

TRADITIONAL WELDING MACHINE FOR REPAIR AND MAINTENANCE WORK.

- ✓ Power input: Single phase 230V – 50/60Hz
- ✓ Accepts welding electrodes from Ø2 to 3.2 mm
- ✓ Very easy-to-use
- ✓ Setting by turning the knob
- ✓ Strong ventilated steel casing
- ✓ Portable
- ✓ Thermal overload protection
- ✓ Selectable welding output power from 55A to 130A



DELIVERED WITH :



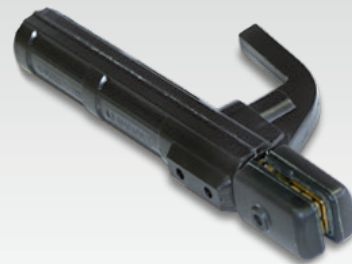
Hand mask
Shade 11






earth clamp
1.5m



Hammer/brush



electrode holder
1.5m

	 50/60hz		I₂ MMA	EN60974-1 (40°C) I_A (60%)	U₀	 cm/kg	
	230V 1~	10A	130A	53A	48V	47x24x32 / 18	